



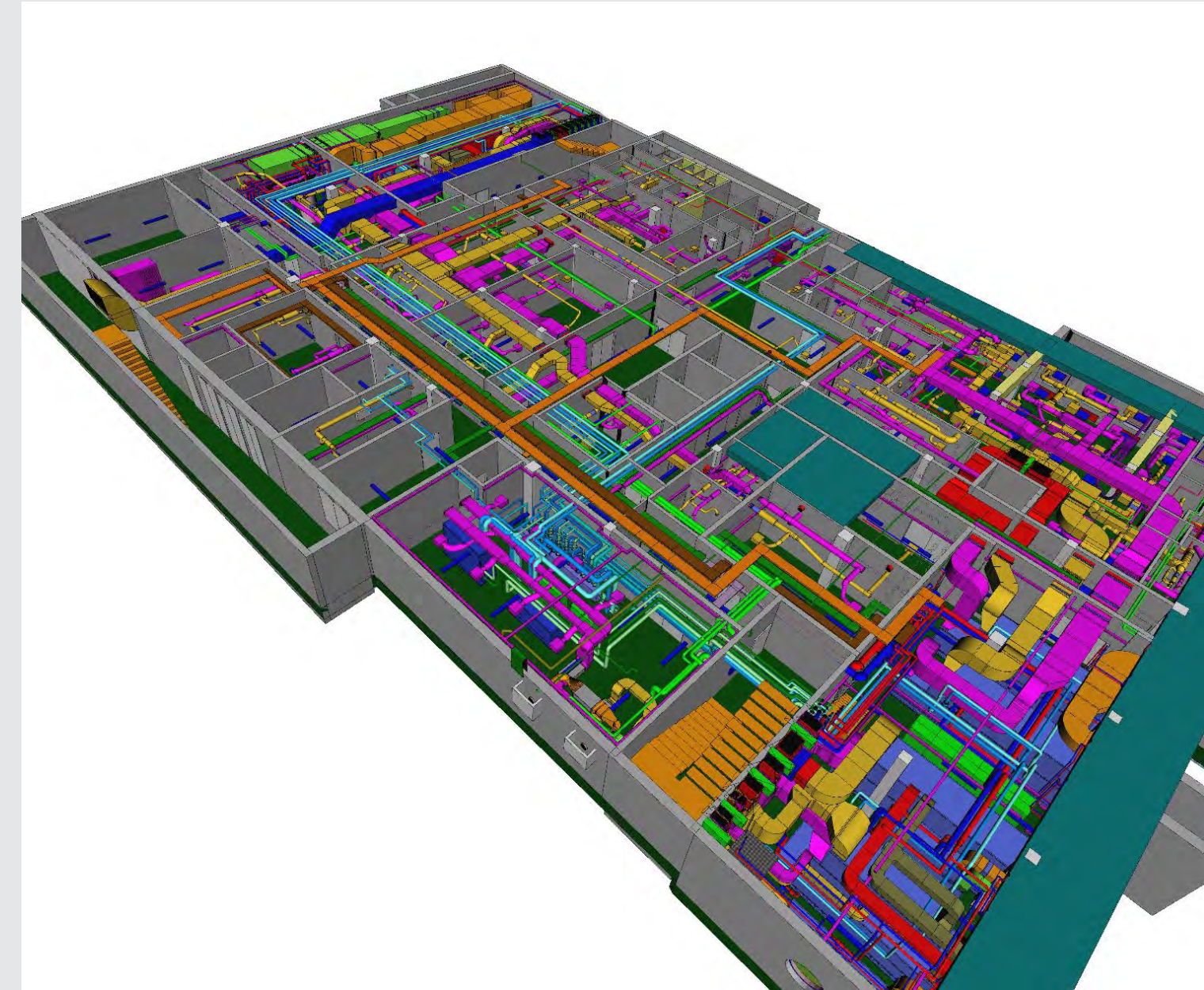
How to use the AL-KO BIM CONVERTER

What does BIM mean?

BIM is a term often used today when talking about software for the construction industry.

AL-KO meets this challenge by providing digital information on central ventilation units.

BIM describes a method of optimised planning, execution and management of buildings using software. All relevant building data is digitally recorded, combined and networked. The building is also geometrically visualized as a virtual building model.



The AL-KO BIM Browser supplies various information and file formats from a previously configured ventilation unit which can be further processed in other programs:

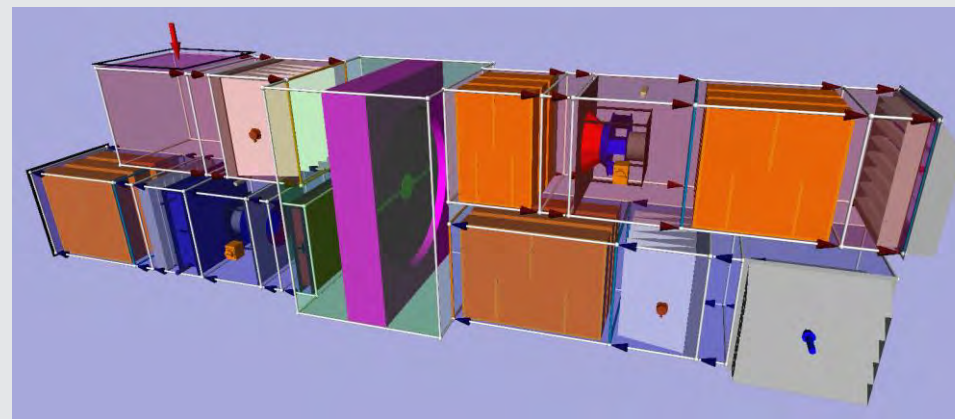
Content	Documents	File format
Information	data sheets, unit drawings, soundemissionen, control sceme, cable list, tender information	.pdf, GEAB, .rtf
Grafic	2-D; 3-D, BIM	.dxf (2-D/3-D), .ifc; .rvt

AL-KO BIM CONVERTER

Step one:

The ventilation unit is configured via the AL-KO Aircloud or Klim@soft.

<https://aircloud.al-ko.com/>



KLIM@SOFT



Step two:

Klim@soft

In the menu - *documents* - a data file with all relevant data can be created using the function "*LiNear Export*". This data container contains corresponding graphic files as well as all other device information such as data sheets or tender information. A file **name.linPRzip** is created.

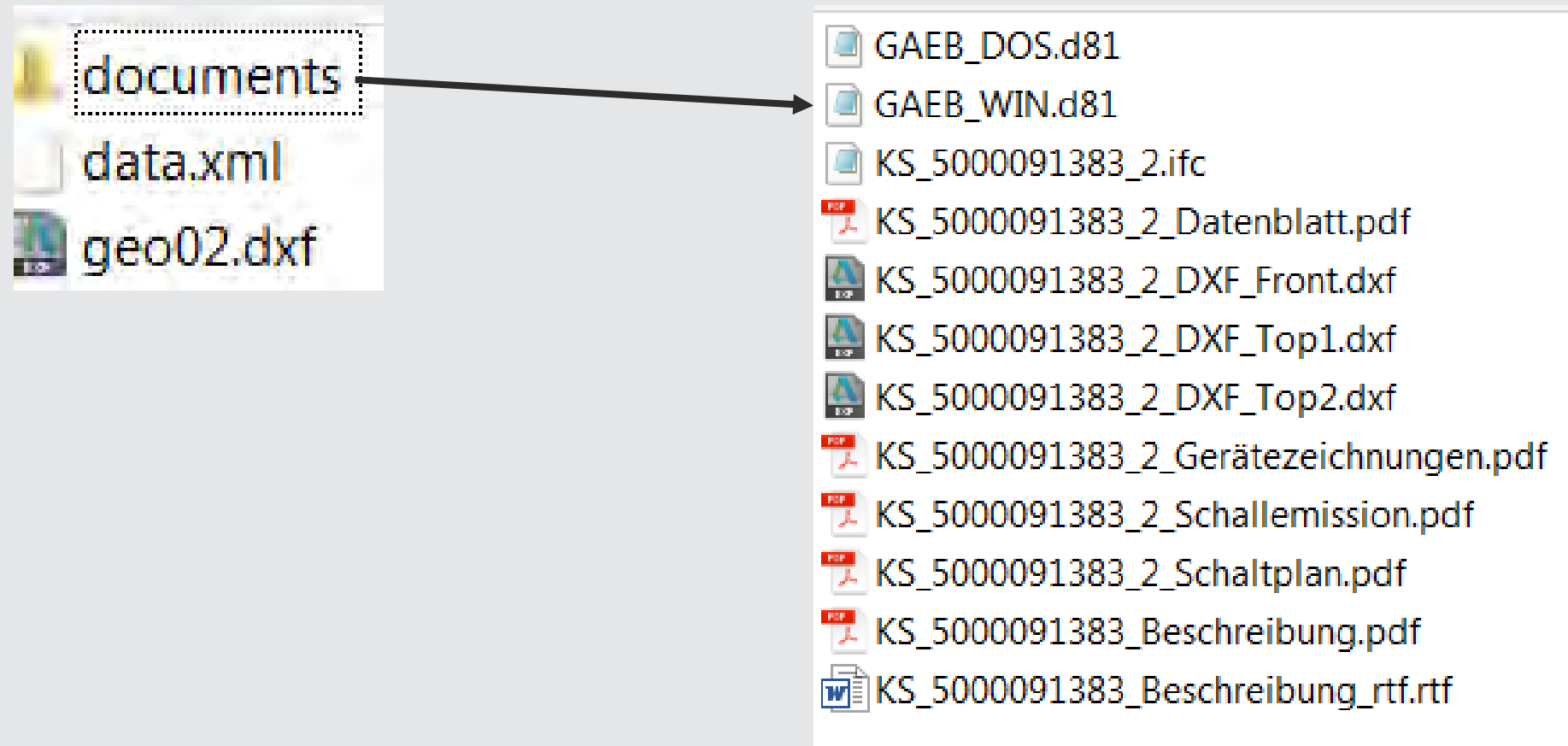
Aircloud

For the unit data "*documents*", the file **name.linPRzip** can be requested with the click field "BIM-Revit".

Note: for units that have a control design, the BIM data file can only be generated once the associated schematic documents have been configured. A warning message is generated in the program for this purpose.

All exported documents are created in the selected national language (GB,D, NL, Rus, Fr)

File content:
name.linPRzip



The files "data.xml and "geo02.dxf" are used for the following conversion to the BIM Revit format. The remaining files can be read out in the BIM Converter.

AL-KO BIM CONVERTER

Step three:

Download of the AL-KO BIM Converters:

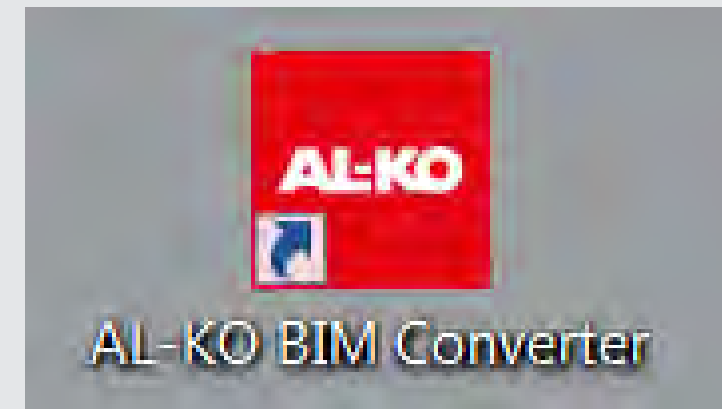
the AL-KO BIM Converter can be for free downloaded at

www.al-co.com/lufttechnik/xxxxxx

and serves to provide the corresponding information, which can be further processed e.g. in Autocad or Revit.

Linear also offers the converter as part of its software maintenance service and thus enables the integration of AL-KO units into your design environment.

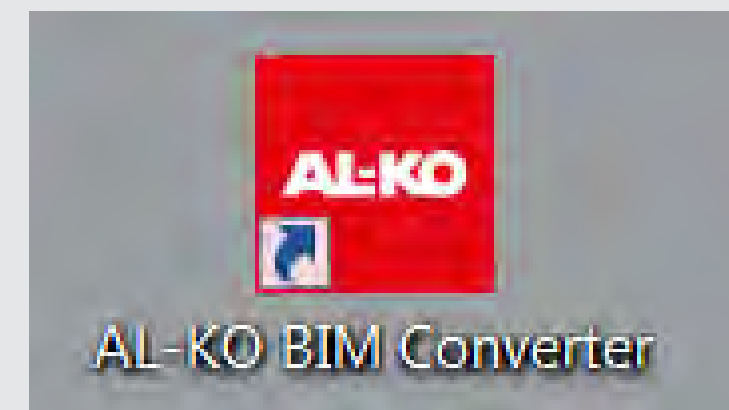
After installation, the software can be found under the name AL-KO BIM Converter at the appropriate place on the computer.



AL-KO BIM CONVERTER

Step four:

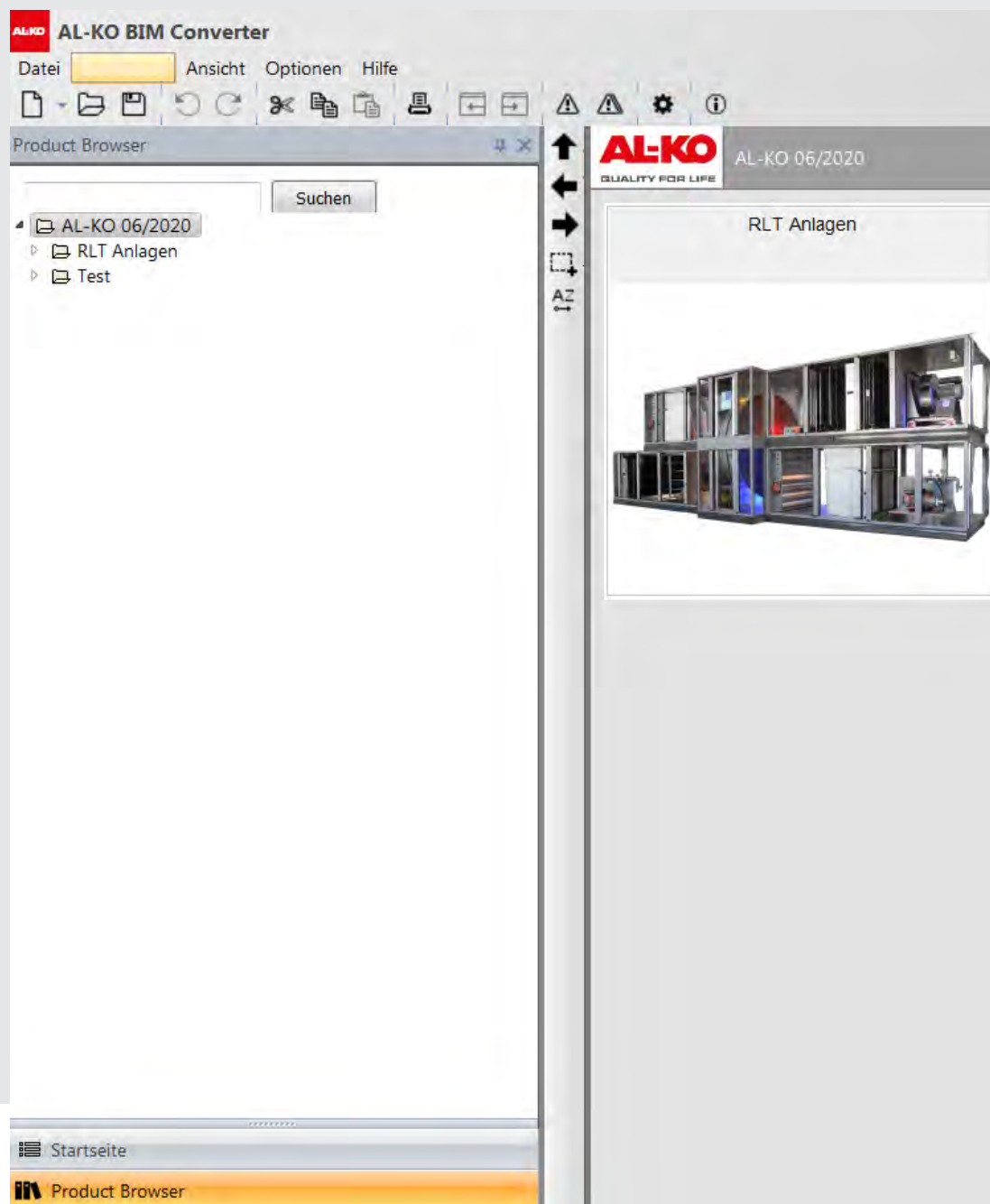
The data package **name.linPRzip** can now be imported via the "AL-KO BIM CONVERTER"



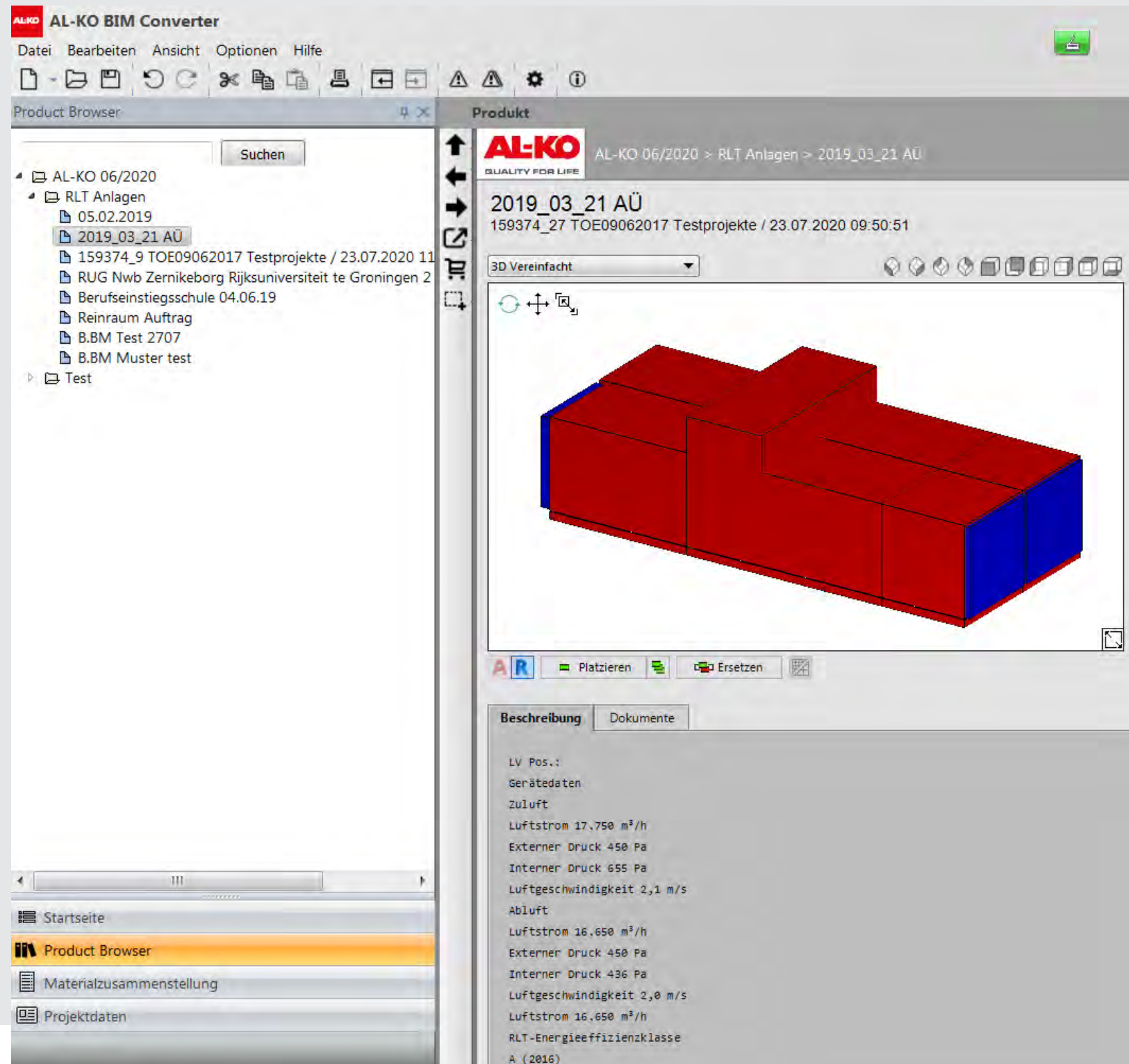
AL-KO BIM CONVERTER

Import data file: **name.linPRzip**

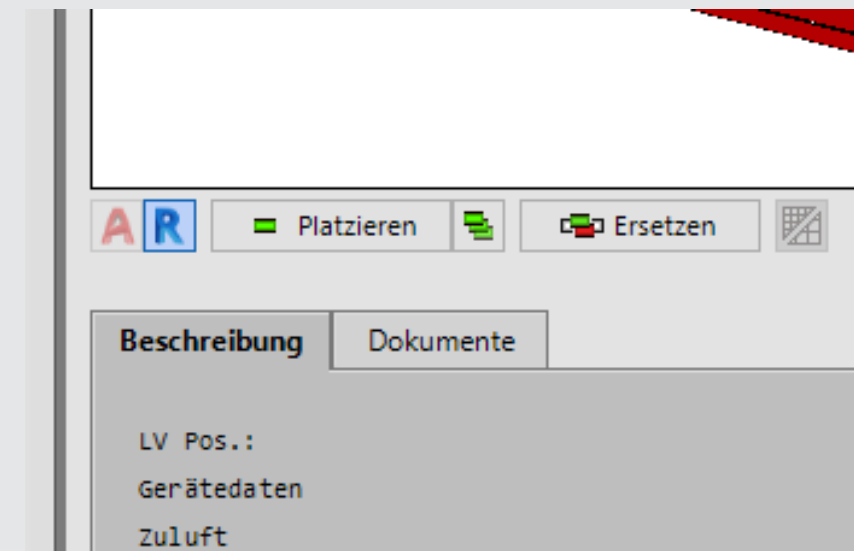
Use the "Import AHU" button to call up the generated data file and import it



AL-KO BIM CONVERTER



The imported AHU is displayed as an overview.

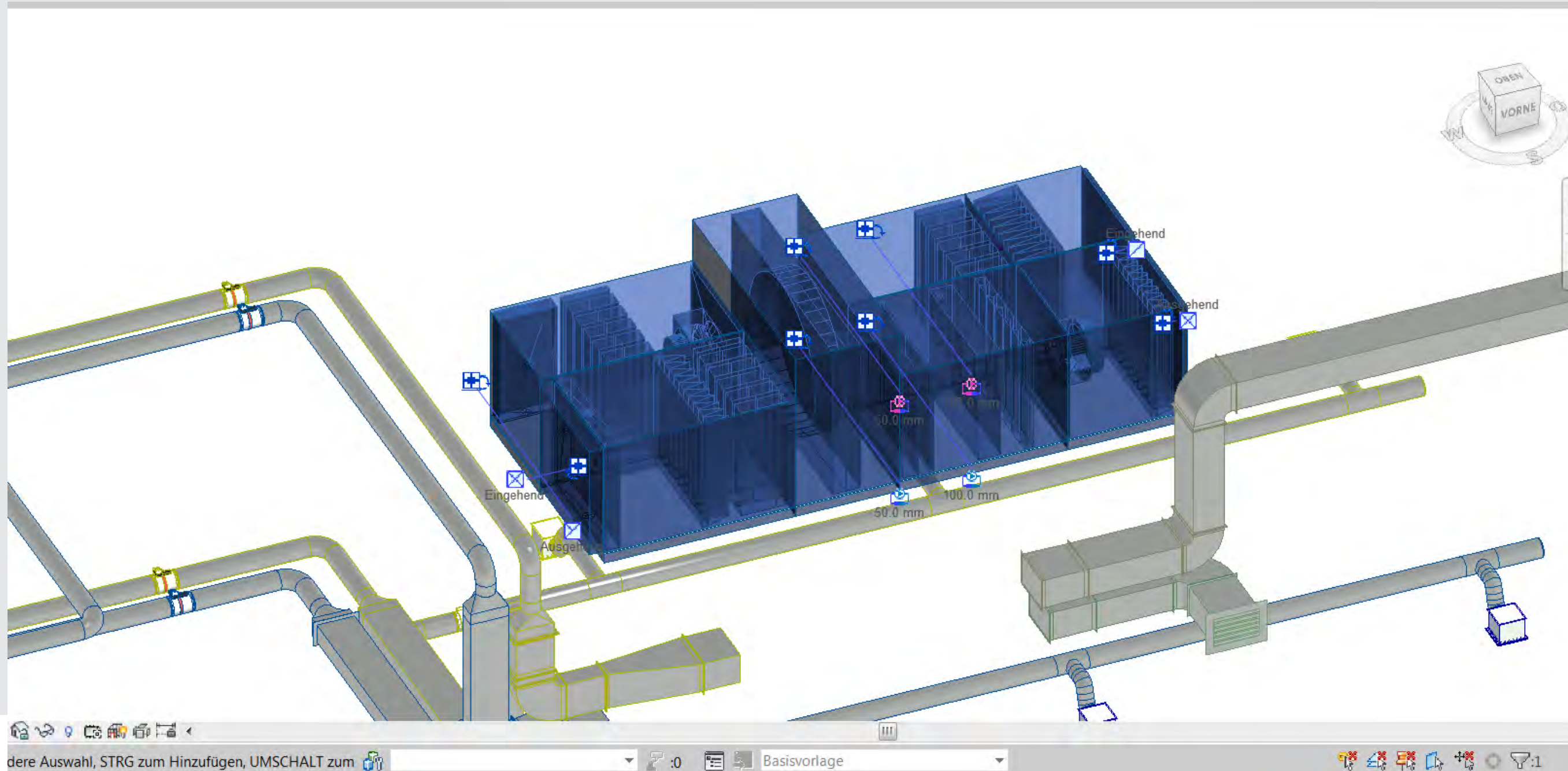


The “place” or “replace” function loads the unit into the previously loaded Autocad or Revit application

AL-KO BIM CONVERTER

Place the unit in Revit or Autocad

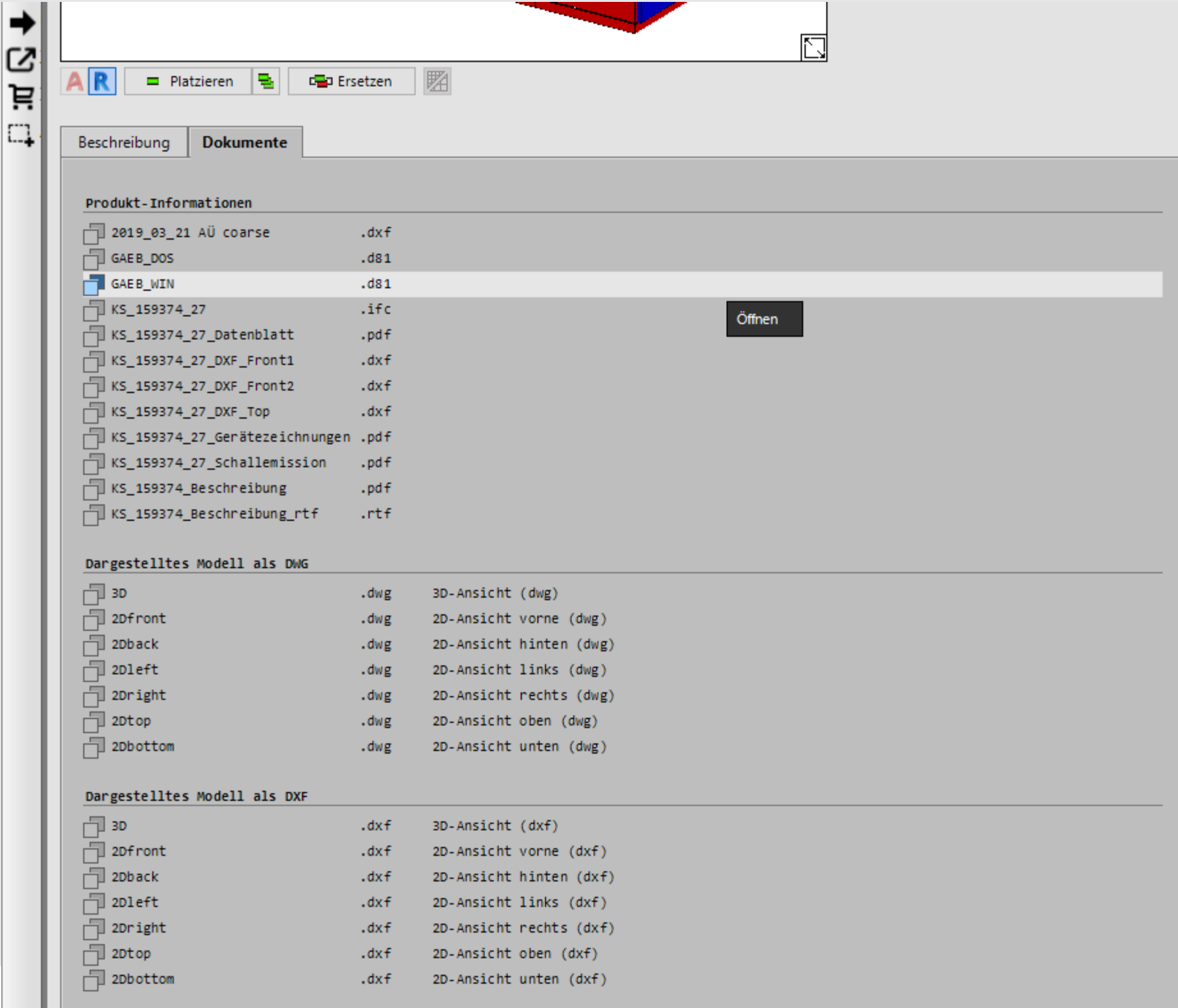
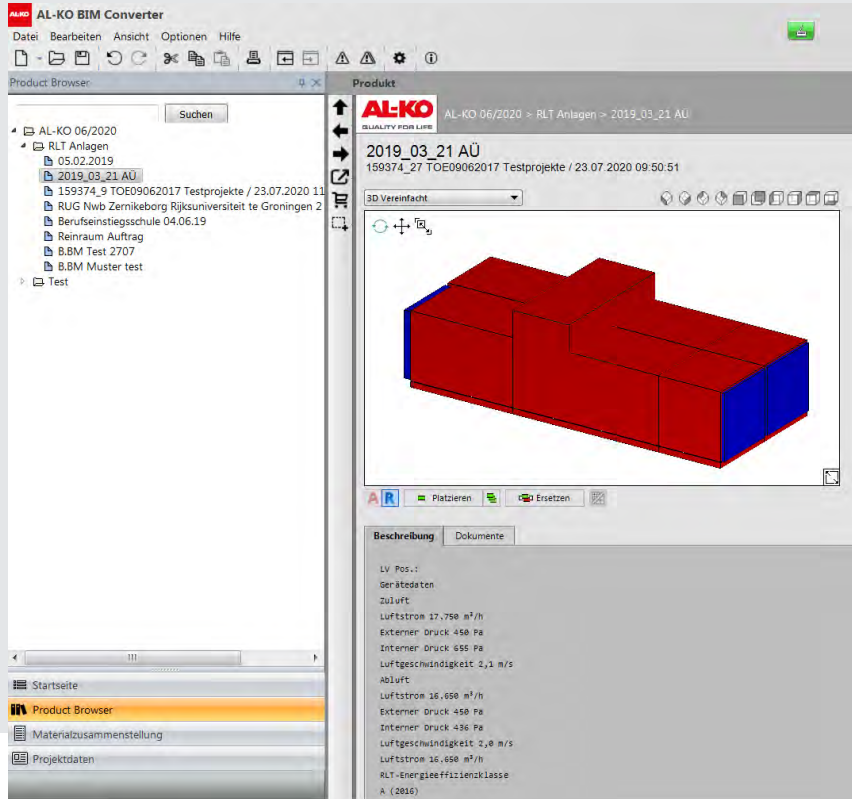
Connection points for ducts and piping for heat exchangers are marked!



AL-KO BIM CONVERTER



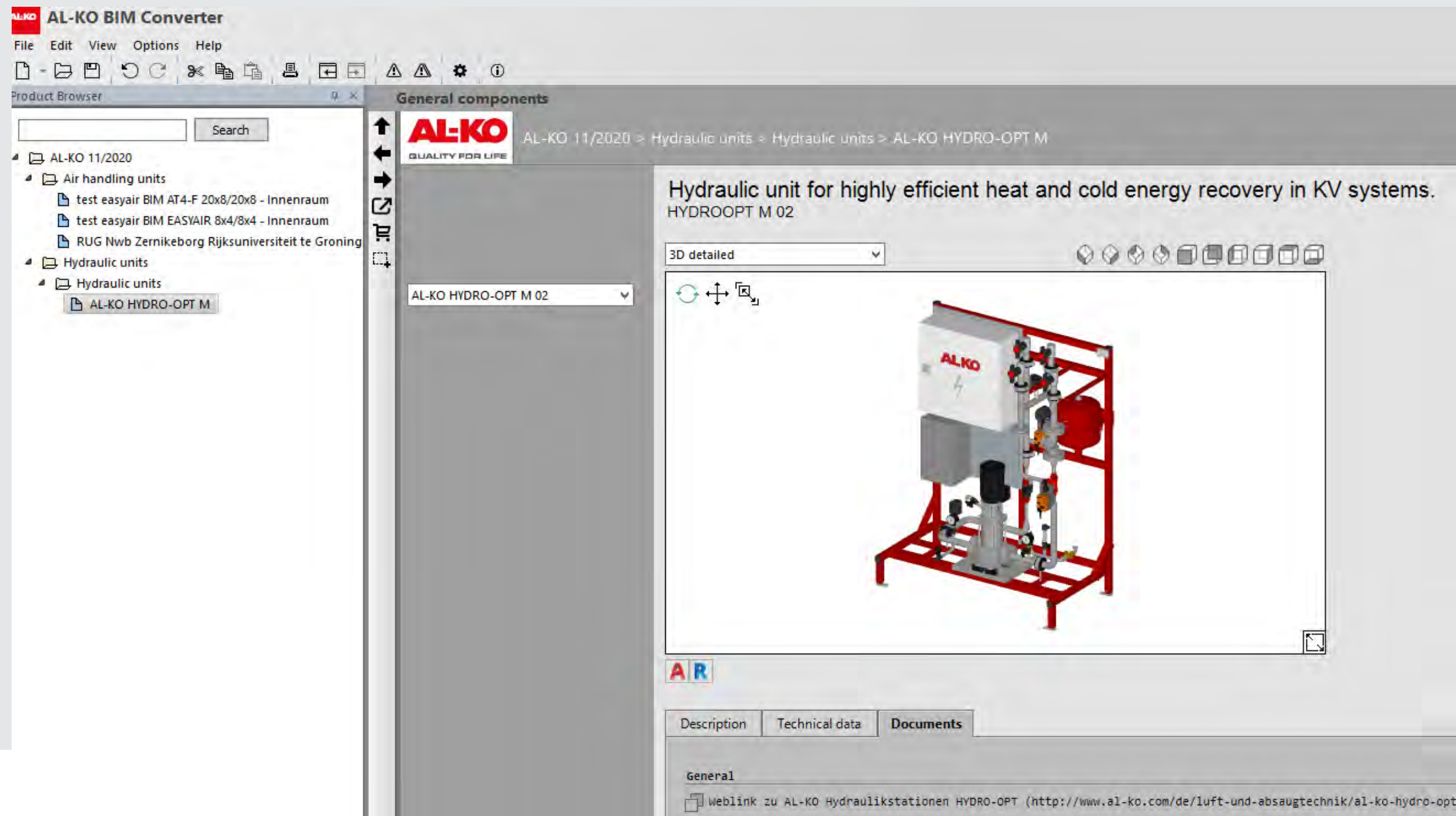
More data files in the BIM Converter can be found for download in the category documents



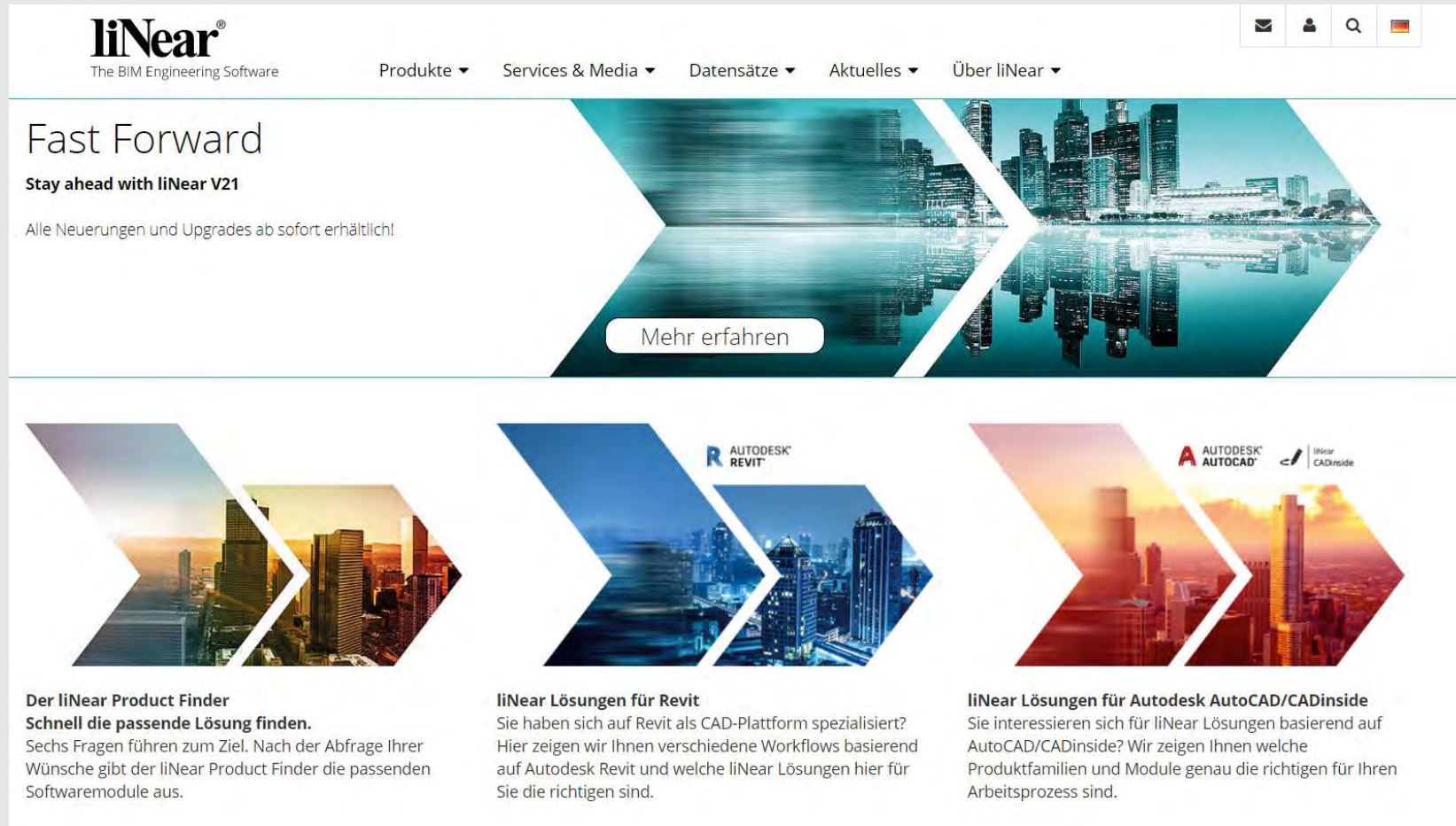
AL-KO BIM CONVERTER

More products for selection or download in BIM Converter:

- currently available run around hydraulic stations type Hydroopt M



AL-KO BIM CONVERTER



AL-KO is also part of the CAD library integrated in the LINEAR TGA planning software

Martin Törpe
AL-KO THERM GMBH
martin.toerpe@al-ko.com

